



The Burl
Member Chapter

A monthly newsletter for the
Willamette Valley Woodturners

Volume 19, Issue 6

<http://www.WillametteValleyWoodturners.com>

June, 2015

Next Meeting

Thursday, June 11, 2015

Center 50+

2615 Portland Rd, NE. Salem, OR 97303

(503) 588-6303

LET THE CHIPS FLY.....

Now that the hot weather is upon us, we can all relax in our nice “air conditioned” shops—don’t I wish. It has been a very busy month for Neva and I with our patio furniture and Saturday market booths doing very well. Not enough time to get ahead on stock, let alone develop new items. Even so, it is a good feeling. I was glad to see the “Beads of Courage” project get a good response—as featured in this issue. It is for a good cause and we thank all those who participated.

Remember to sign up for our two summer events; the Steamup at Antique Powerland on Saturday, July 25 and Sunday, July 26; also Saturday August 1 and Sunday August 2. Then the State Fair event Wednesday, September 2, through Monday, September 7. As always we can use as many members as we can get signed up.

Next meeting June 11 should be exciting with Soren Berger returning for another presentation. He has always been able to stimulate many members’ creative abilities.

I’ve got to get back to the shop and finish a couple of orders. Looking forward to seeing y’all on Thursday the 11th.

Bob Hutchinson, President

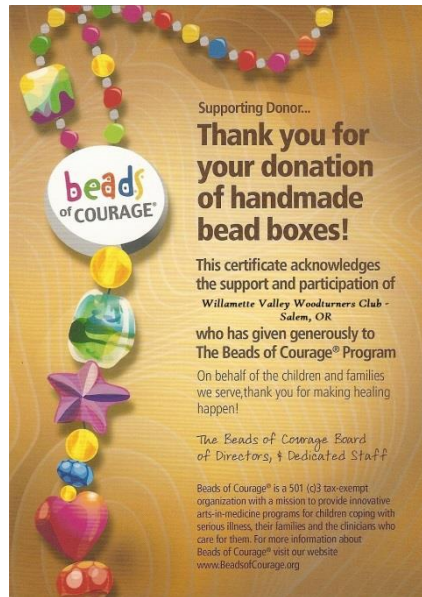
May Treasurer’s Report, by Henrik Aberg

Beginning Balance	\$9,188.84	
May Income		May Expenses
Raffle	92.00	None Recorded
Glue Sales	20.00	
Total May Income	112.00	Total May Expenses
Ending Balance	\$9300.84	\$0

May Membership Report, by Henrik Aberg

No change from last month. The club has 103 members.

Beads of Courage program



The club sent eight Beads of Courage boxes to the National AAW Symposium. The Beads of Courage program supports kids going through serious illness like cancer. Through the Beads of Courage, children receive a unique bead to represent each procedure or treatment. For example, a red bead for each blood transfusion, a yellow bead for each night in the hospital, a star bead for surgery, a white bead for chemotherapy. Their collection of beads becomes a tangible record of their journey. Each wood turned box will be used to hold a sick child's precious beads.



Thanks to the following members for turning and donating boxes:

Walt Thies, Paul Hirt, Jim Devorss, John Reppeto, Hal and Nancy Schalles, Ron Freshour, Elling Hoem and Mark Choitz

Club Business

Current & Upcoming Events

June Demo, Soren Berger

Tool development

June 11, 2015



Our June demonstrator will be Soren Berger, who will be traveling to the US from New Zealand. Soren is no stranger to the US or to our group. He is well known throughout the world as a teacher, demonstrator and exhibitor, with his art pieces featured in many journals, publications and books. Sören’s interest over the last 5-6 years has been focused on developing tools that enable everybody to create beautiful objects with ease of use. The two-day workshop on June 13-14 is full at this point, but you can request to be an alternate.

July Demo, Alan Stratton

Segmented Bowl
July 9, 2015

A committed woodturner, Alan lives in Tigard, Oregon and actively Willamette Valley Woodturners. That’s a commitment! Alan’s promise to variety, whether solid or segmented. Alan shares his week on YouTube and you can be a part of his world by subscribing www.AsWoodTurns.com. Alan will demonstrate creating a wood bowl. He is a firm believer that every woodturnier should have a understanding and ability to produce a segmented turning. A challenge for all of us! This is your chance to get started.

participates in
specialty is a
work every
to
segmented
basic



August Demo, Alan Carter

Creative ability to “think outside the circle”
August 13, 2015

Mark the date and plan to attend. Our August demonstrator will be Alan Carter from North Carolina. Alan will share his creative ability to “think outside the circle” and share his thought process from design to finished product.

With a degree in music from Indiana University School of Music, he started his artistic exploration. From painting photorealistic urban landscapes to designing and building contemporary furniture, Alan has allowed the right side of his brain to guide his endeavors.



His design influences are many and varied. The shapes and proportions of interesting buildings may spark an idea. Art Deco and Asian influences are certainly evident in some of his pieces. He often lets the wood itself suggest the shape or pattern. Even organic sources such as land formations and plant structures can have a subtle pull.

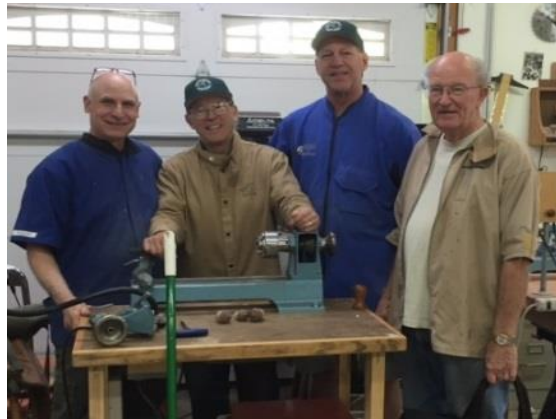
Regardless of the influence, the end result will be intriguing.

Alan will also lead a workshop on Saturday/Sunday (August 15-16) for those interested. The cost will be \$220 for the weekend. This one will fill up quickly, so please sign up soon.



Sawdust Session Attracts 5 Nuts

The recent sawdust session held at Terry Gerros' shop was a fun morning of learning and turning. Jim Devorss showed us his method for turning an acorn box. After watching Jim we all got to try our hand at it. We learned a few new techniques and got to try out some new tools. You can see from the smiles that everyone had fun. Keep an eye on the Burl for the date and topic of the next Sawdust session.



Membership Rewards

Library

A friendly reminder to members with books and /or videos checked out from the library. Please return them at this next meeting.

Wood Gathering

Sign-up sheets will be available to indicate your availability to help with wood gathering. Anyone who learns of a tree or log that is available to the club should notify Jerry Lelack (503 510-1577) or Bob Hutchinson (503 508-3279). The intent is to gather wood, process it to usable pieces, store it at the home of Terry Gerros, and then make it available to members. Terry can be reached at 503 580-5013.

From Terry Gerros:

I am a distributor for Stick Fast CA glue, Sharpfast Sharpening systems, and the Holdfast vacuum chucking system. If you have an interest in these products, give me a call or send me an email for details.

Supplies

The club purchases a few supplies in bulk and sells it to members at club cost. We routinely have superglue (\$5), black or brown superglue (\$10) accelerator (\$6) and Anchor Seal (\$10/gal). The club purchased a small supply of half round protractors (\$6) used to measure the angle ground on a tool, and depth gauge (\$5). Bob Quadros will have the resale items still available at the meeting. Please bring the correct change for the items you want.

Club Member Discounts

- From Jeff Zens: The club's Craft Supply order will be going out on **June 15th** if our order equals or exceeds \$1,000. Craft Supply gives us a 10% discount plus free shipping in all items, and occasional additional discounts on certain other items and quantity purchases. If you order from the sales items, you will receive the club discount in addition to the sale discount, making many items available at very attractive prices. When filling out the web site order form, please use the item number and complete item description from Craft Supply's web site. Do not use an old catalog item number, as these might not be current. Occasionally, Craft Supply is out of an item, and I'm notified that it is on back-order. I will assume that if an item is ordered, it's wanted as soon as it becomes available. If you do not want an item if it is back-ordered, make that comment in the "Notes" column on the club's order page on the web site. I work with Craft Supply to have back-ordered items shipped directly to the member's home address ad no additional cost. For this to work effectively, the entire order must be paid for when your in-stock items are picked up. While I'm not equipped to accept credit cards, cash or check are both fine.

Contact me with any questions at jeffzens@custombuiltfurniture.com.

- Club members are registered with Klingspor's Woodworking Shop at www.woodworkingshop.com or 800-228-0000, they have your name and will give you a 10% discount.
- Hartville Tool will give club members a 20% discount for the next year and a 15% discount after that: www.hartvilletool.com or 800-345-2396
- If you show your club card at checkout time to the cashier at Woodcraft in Tigard they will give you a 10% discount (may not apply to some machinery).
- Exotic Wood is offering a discount of 15% off any orders placed at: www.exoticwoodsusa.com . (This includes sale items and free shipping on orders over \$300). Use promo code ewusaAAW

- Gilmer Wood now offers our club a 10% discount on purchases made there. If you haven't been to Gilmer's, it is well worth the trip to Portland, if only to make your mouth water and make you cry if you leave empty handed.
- North Wood Figured Wood can be viewed at North Woods Figured Wood. Here's our website www.nwfiguredwoods.com . Please take a look! We're happy to offer you our courtesy 15% discount. Anyone from our club can simply type in "WOODTURNERS" at check out to receive the sale price. No minimum purchase. We've got beautiful Big Leaf Maple, Black Locust, Madrone, White Oak, Ash, Elm and Yew.....turning blanks, slabs, burls and lumber.

Club happenings in our area

(Please visit the club's website listed below for additional information)

Northwest Woodturners (Beaverton, OR)

<http://www.northwestwoodturners.com/>

Meet first Thursday at Franklin High School

Cascade Woodturners (Portland, OR)

<http://www.cascadewoodturners.com/>

Meet Third Thursday at Franklin High School

Beaver State Woodturners (Eugene, OR)

<http://www.beaverstatewoodturners.com/>

Meet fourth Thursday at Woodcraft

Southwest Washington Woodturners (Vancouver, WA)

Dan Baker (President), email: ridgewoodworks@aol.com

Meet fourth Wednesday at the Friends of the Carpenter's Center

Burl is a Publication of the Willamette Valley Woodturners

Executive Board

President – Bob Hutchinson

Vice President – Bryan Thoet

Secretary – Jim Devorss

Treasurer –Henrik Aberg

Past President – Terry Gerros

Board Position 1 – Paul Hirt

Board Position 2 – JJ Jones

Non-Executive Positions

Newsletter Editor Bob Thompson

Web Master Ron Fox

Wood Gathering Jerry Lelack

Librarian Jerry Lelack

Send dues & other financial matters to:

Henrik Aberg

7231 Bethel Road SE

Salem, OR 97317

Coordinators Myron Yancy (Steam Up)
Bob Hutchinson (State Fair)

New Members Bob Garvey
Tom Morrison

Facilities Bryan Thoet
Paul Hirt

Calling Tree Carl Rodney

Video Jeff Zens
Larry Curry

Checks payable to: Willamette Valley
Woodturners

Send all other club correspondence to:

Bob Hutchinson

3105 Evergreen Ave NE

Salem, OR 97301

nhutch@wvi.com