



The Burl

A monthly newsletter for the
Willamette Valley Woodturners

e-mail: wwturners@gmail.com

We are also on Facebook



Member chapter

Volume 26, Issue 8

A non-profit/501(c)(3) corporation

August, 2022

**Next Meeting: 6:30-8:30 PM, August 11, 2022
Salem 50+ Center**

Hello Willamette Valley Woodturners!

PLEASE be aware **the format for our next meeting has changed**. To get the best info about this, please read my article in the Burl attached here.

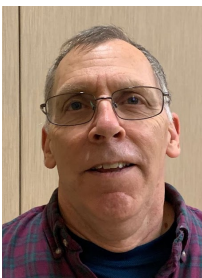
We have changed the format to celebrate the 25th Anniversary of the club. We are asking folks to BRING stuff. Be ready to see folks you may not have seen in a while and there will be cake!

Anyway, please read, and PLEASE come to the next meeting. August 11th, doors open at 5:30, gavel to order at 6:30.

Stay sharp for Happy Turning!

Marc

President's Message August, 2022



Happy 25th Anniversary!

Hello Willamette Valley Woodturners,

As our esteemed member Walt Thies has written (April 2022 Newsletter), the Willamette Valley Woodturners organization has reached the milestone of 25 years in existence. I must say, that amount of time for any business is a good indicator of its persistence, desire, and strength. For a nonprofit, it is a good measure of the glue that keeps on the mission of having a good time, doing a thing we love to do, and sharing it with the next person that wants to learn a little bit more.

In an effort to celebrate this event, the regular August meeting has been a bit modified. Rather than our standard format, we will be focusing on the work people have done both recently and historically. And in an effort to bring back many of the original members and long-time members who may have strayed away, we have tried reaching out to many of these folks by phone calls and other word of mouth means. PLEASE come and BRING your stuff!



The meeting will still start with the Pledge of Allegiance, and have as few announcements as possible. But then we will jump into an extended Show and Tell for members to have their items reviewed and hopefully answer any questions about their work.

As a Special note, we will have one of our newer members bringing his piece that has been showcased in the most recent edition of the American Woodturner Magazine (August 2022). Look for **Warren Gookin's** piece (page 56) and his accompanying write up. Gotta say, IT IS AMAZING! Thanks Warren! And congrats for getting it published!

Following Show and Tell, we will have a new segment called Then and Now. If you are an AAW member, you can see it is a direct reference to the recent edition of the American Woodturner Magazine (August 2022) and their article (page 42). The objective of the segment is to showcase the growth over time that a woodturner may experience. We are asking members to bring a wood turned item from the beginning of their woodturning life as well as a current piece. I know I have a piece that is well loved (wedding anniversary gift), but it actually has the screw holes from the faceplate in both the lid and the base. And the base is about 40% of the height. And I don't know what year since I didn't sign things then. Turned on a Shopsmith!

I know I am looking forward to seeing things from the masters in our club that represent their early work!

The real message is that no one starts as a woodturning master.

Following Then and Now, we will take a break and have to eat some cake. Yes, we will have CAKE!

Paul Hirt has suggested we have folks anonymously complete a one item questionnaire. Pens and paper will be provided at the door. While we are breaking and eating cake, there will be a time to look over the responses and then restart with this last segment. While the questionnaire is not yet set in stone, the focus of the question is to ask folks to talk about their most memorable experience as a woodturner or as a club member. Or perhaps what the most important piece of advice they have gotten or would share with the next person if they had the opportunity. Please consider these kinds of things and PLEASE provide a response.

Assuming this may not fill the entire evening, we are also open to **members bringing in any sort of Gizmo or Gadget** that they wish to share.

I am sure that idea could take an entire evening by itself but please feel free to share anything you have learned over the years. Somewhere about 8:10, we will call out the winners of the raffle items and if we have determined the votes for the best of Show and Tell it will also be called out then.

Special Note: As we have made a special effort to reach out to our esteemed HONORED LIFE MEMBERS, we are also aware they may have a strong desire to leave prior to the darkness as traveling at night is not always a good idea. On that note, the festivities should officially wrap up about 8:15. However, the room stays open until 9:00 and if driving after dark is no issue, all are welcome to stay. There will probably still be cake. Stay and socialize!

If you have any questions on this revised format for the evening, please feel free to contact me.

On announcements, there are several things I would like to list here and will briefly mention them at the meeting.

State Fair is coming up soon. Please see the signup sheet and take a spot. As has been the usual, we get an entry pass and a parking pass for the days we come to demonstrate. If you wish to come to our booth and just be there to help, that's OK too. Learning at the State Fair is contagious. Dates are Wednesday, Aug 31st to Monday, Sept 5, 10 AM to 8 PM. We are generally setting the list to be two 5 hour shifts 10 – 3 and 3 – 8. The more the merrier!

Empty Bowls: Still on for November. In addition to providing donations of wooden items from the lathe, there will be a demonstration area. Not sure as to actual format, but the area is tiled and there will be potters on wheels and probably woodcarvers. And a new twist: The items do not necessarily have to be bowls. At the last event, all sorts of items were presented for sale. So, use your imagination and consider rolling pins, lidded boxes, scoops, bottle stoppers and so on. Another feature, I am linking up with some potters to learn what is involved in making wood lids for the pottery box. Anyone who wants to join in on that, let me know. Should be easy.... Darcy is our lead person on this, but I can be reached as well if you have questions and/or want to demonstrate.

Staff members needed for two positions:

New Member orientation: This will be a member who will reach out to new members to help explain what's involved in being in the club and be available to answer their questions.

Meeting set-up volunteers: We need help getting all the equipment set up before the regular meetings. If you can be at the Senior Center ahead of the meeting, it would be GREATLY appreciated. I am usually there by 4:30. One guy setting up requires 2 hours. Several guys setting up might be, well you can guess. Please consider getting on board on a regular basis like Roger, our Librarian. Thanks Roger! And Thank You Gary for arriving early last month.

Stay Sharp for Happy Turning!
 Marc

Upcoming Presenters and Events

<u>Date</u>	<u>Presenter/Event</u>	<u>Topic</u>	<u>Follow-Up/Sawdust Session</u>
8/11/22	Marc et al	25th Anniversary Celebration, Gadgets and Gizmos	Yes Sawdust Session 8/14/22, 9 AM-Noon, Darcy Tataryn’s Studio
9/8/22	Kathleen Duncan	Piercing	Yes Sawdust Session 9/11/22, 9 AM-Noon, Darcy Tataryn’s Studio
10/13/22	Tom Willing	Spheres!	TBA

Notes from July club meeting:

*Attendance: 36 including 2 new members and 3 guests
 Meeting was gavelled to order at 6:30 followed by the reciting of the Pledge of Allegiance.

Announcements: President **Marc Vickery**

***Steam Up:** WWW will not be demonstrating this summer. Earlier negotiations regarding location will take place with the goal of demonstrating next year.

***State Fair:** WWW will be demonstrating over the course of 6 days (see notes above).

***Hybrid meetings:** Based on responses, it was determined more interest needs to be shown before the club will pursue the equipment and training needed to hold such meetings. More interest was shown during discussion, especially the idea that we could see national or international turning demos without incurring the cost of bringing the presenter to our location.

Show and Tell: Darcy

*Approximately ten wonderful items were shared with the group (see pics below).



Presenter: Rick Rich

Notes: *Rick discussed and demonstrated the turning and construction of a three-piece candy stand followed by some instruction and advice on using the skew.



Base

-Started the base with a 2” thick by about 4” dia blank mounted on a screw in his chuck.

-Rich trued up the blank and then cut a shallow mortise (he has a little “cheater stick” he uses to lay out his mortise dimension). He uses a skew as a scraper to final shape the mortise shoulder to match his chuck jaws.

-He then used a Jacob’s chuck to drill a 5/8” hole just a little way in. He will finish the hole from the top side. This lessons tear out and makes room for the bit coming in from the top (so you won’t hit the chuck). The hole is for the post connecting the top to the



bottom.

- He then reversed the piece and mounted it on the chuck jaws and then turned 1 1/2" away and shaped the base.
- Rick advises to cut the mating surface slightly concave to leave a tight fit with the post.
- He then drilled the 5/8" hole the rest of the way through from the top. He says to listen carefully to hear when the bit goes through.
- A little sanding and the base is done!

Top

- The top dish uses similar steps but is turned with a tenon. He starts with an approx 7" blank and turns it down to about 6 3/4". He again starts with the blank on a worm drive and by cleaning the face.
- Rick advises using a pencil to lay out lines and to take the time to make clean cuts.



- Next was to shape the bottom of the dish and tenon and then drill in about 1/2".
- He then reversed the piece, reminding us to not crush the tenon in the chuck.
- Rick bought up the tail stock to support the piece, removed much of the bulk, and began the dishing out cuts.

- *He advised us to use our fingers on the back of the piece and put a lot of downward pressure on the tool rest to reduce vibration.
- Like on the base, light, controlled cuts should be used for the final passes.



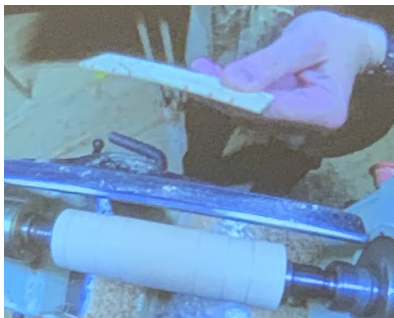
- He then reversed the top again using the chuck as a jam chuck with some rubber drawer liner to keep the jaws from marring the inside of the dish.
- A cone live center was used in the tailstock.



- Light, gentle cuts were made to "artistically" shape the tenon to be part of the piece.
- A bit of sanding, including some final passes using shavings, and the top is done.

Post

- Rick turned the blank between centers to a cylinder using a peeling cut with the skew and the lathe running at 2900 rpm.

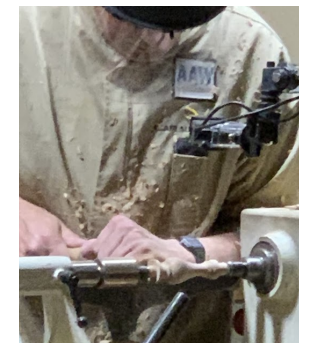


- He uses a story stick to mark the layout of the coves, beads, and tenons.

- He used a parting tool to sneak up on the tenons, checking the fit often to make sure they're tight.

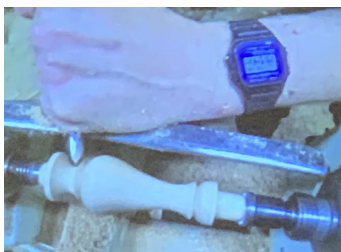
- *Remember: the top tenon cannot be too long or it will bottom out; the bottom one can be longer as that hole goes through and there is room.

- Rick advised us to make the tenon shoulders slightly concave to make tight looking joints.



- He then just worked through making coves and beads based on his story stick.

- *V-cuts are best cut with the skew which he also uses to make the beads and shallow coves. Deeper coves were done with the spindle gouge (remember to start with the spindle gouge at 90° to get the bevel established in the cut).

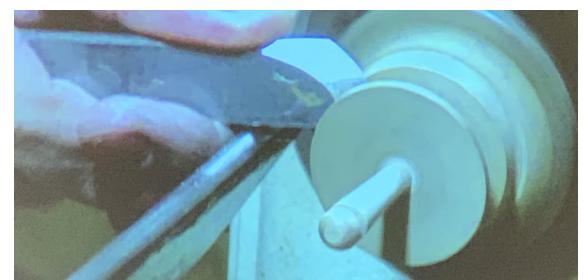


Assemble

- **Editor's apologies: I don't remember what finish Rick uses. His tenons were tight enough to not need glue, but if gluing, he said to use regular wood glue as the CA glue doesn't hold up as well over time.

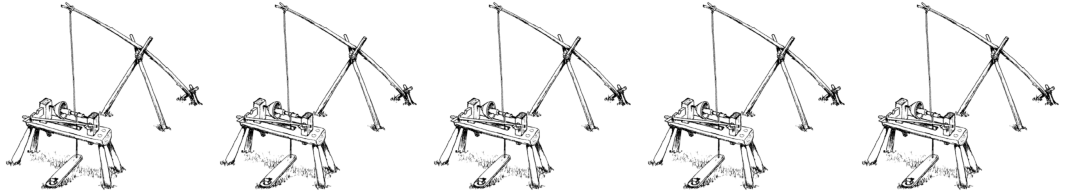
Skew advice

- Always wear a face shield
- Use high speed
- Practice peeling cuts to make spindles cylindrical
- Make spinning tops

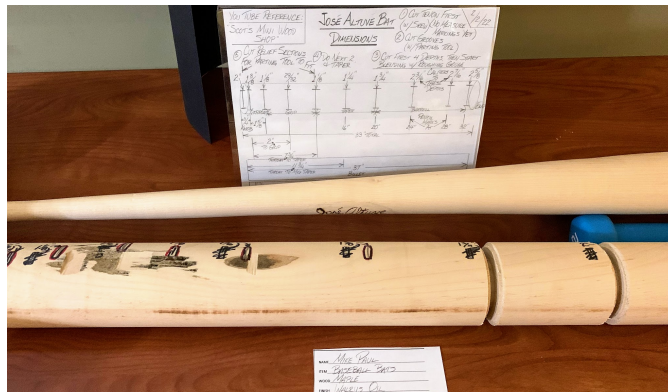
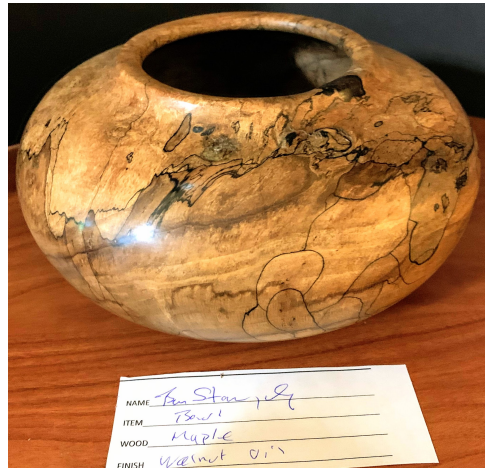
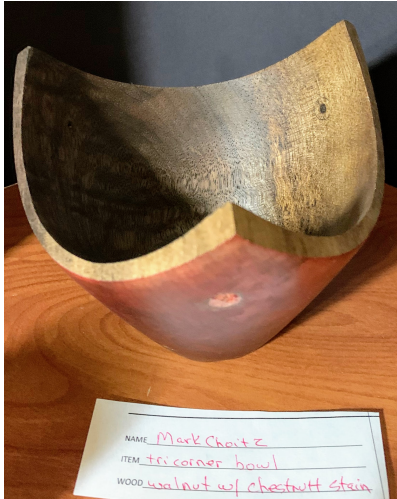


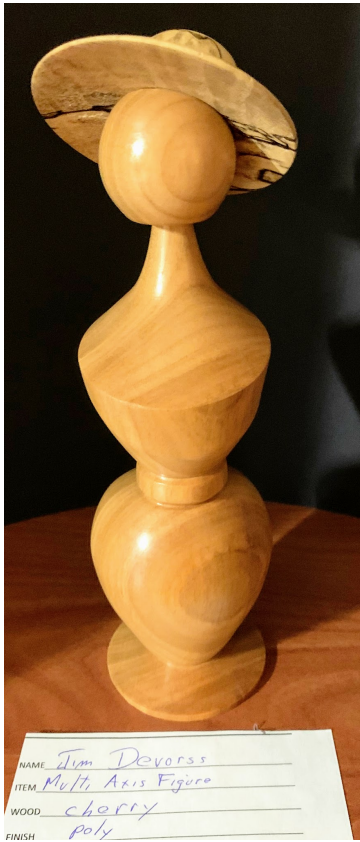
- Watch the top of the wood as much as the cutting point (same true for spindle gouge)
- Use fingers to support thin spindles
- Watch Allen Batty's Craft Supplies video

Thank you Rick for sharing your expertise with us! Your self-deprecating humor despite your obvious ability was quite entertaining. And calling out Darcy frequently? Priceless.



Gallery



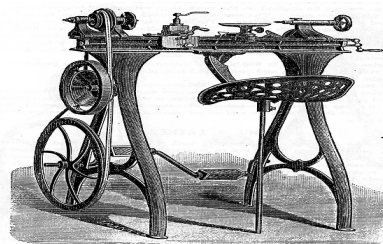
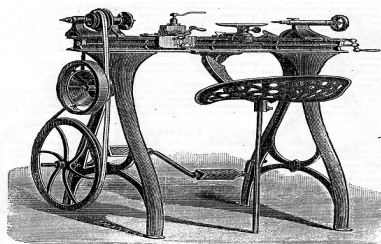
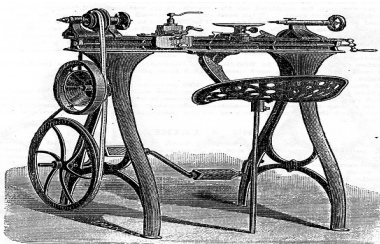


July Sawdust Session:

It was a beautiful day for a trip to the countryside near Turner to the studio of Darcy. If you have not been there, it is a fine place to socialize, get some hands-on tips, pass on some tips, and try out some tools.

Just over a dozen folks showed up with work as varied as sharpening, Cole-jaw use for finishing the base of a bowl, and even a lidded box!

Thanks again for hosting Darcy!





Jerry Robnett shop equipment for sale :

Julie Robnett is the contact and can be contacted at 541-791-7040.

Location is in Tangent.

Please call to make an appointment to visit or ask questions.

Available as of this writing:

13 ½” Ridgid planer

14” Delta bandsaw

21” RBI Hawk scroll saw (on wheelchair accessible stand)

10” Delta miter saw

Makita 3612C router

Harbor Freight dust collector

Ring Master lathe

10” Craftsman table saw (with many accessories)

10” Hitachi miter saw

2 HP 33 gal. Craftsman air compressor (with 2 hoses)



Question: What do y'all do with your shavings? I roughed out a bunch of bowls and ended up with about a dozen garbage cans worth which I just week-by-week added to my yard debris cans until gone (since there were no artificial contaminants). I think member Nick uses his in his pig enclosures!

Send me a note or pic!



Membership Rewards

Chain Sharpening Service from Jeff Zens: I have an electric chain sharpener and can accurately sharpen your chains and adjust depth stops for your saw chains. This service will restore the chain to “factory-new” condition. Most chains for 18" and shorter bars can be sharpened for \$10.00. Longer chains (up to 30" bars) are \$20.00. Badly damaged chains might be a little bit more. I will also tell you if the chain has reached the end of its useful life, and will not sharpen a chain beyond that point. This price is only available for club members.

Supplies-See Jerry Lelack at club meetings

The club purchases a few supplies in bulk and sells them to members at club cost.

*CA superglue (\$6), black or brown superglue (\$10) accelerator (\$10).

*Half round protractors (\$6) used to measure the angle ground on a tool

*Depth gauges (\$5)

*HSS 1/4" x 8" Round Tool Bits rods

*Anchorseal (\$9/gal) and walnut oil (\$20/gal) are available through **Jeff Zens**. You will need to bring your own gallon containers; contact [Jeff](#) to make arrangements.

Wood Gathering

Anyone who learns of a tree or log that is available to the club should notify **Randy Nichols**.

From Terry Gerros

I am a distributor for Stick Fast CA glue, Sharpfast Sharpening systems, the Holdfast vacuum chucking system and Saburrtooth Carving bits. If you have an interest in these products, give me a call or send me an [email](#) for details.

Club Member Discounts

- **Club Member Discounts at Craft Supply:** The club's order is processed the Monday following our Club meeting if it equals or exceeds \$1,000. Craft Supplies offers us a 10% discount **plus** free shipping on almost all items (lathes and other heavy items are excluded) and occasional additional discounts on certain other items and quantity purchases. If you order from Craft Supplies current sale items, you will receive the club discount in addition to the sale discount, making many items available at very attractive prices. For detailed instruction for ordering see the article in the **January 2022 Burl**, available on the club's website. Questions? See [Jeff Zens](#).
- Club members are registered with **Klingspor's Woodworking Shop** at www.woodworkingshop.com or 800-228-0000. They have your name and will give you a 10% discount.
- If you show your club card at checkout time to the cashier at **Woodcraft** in Tigard they will give you a 10% discount (May not apply to some machinery).
- **Exotic Wood** is offering a discount of 15% off any orders placed at: www.exoticwoodsusa.com. (This includes sale items and free shipping on orders over \$300). Use promo code ewusaAAW
- **Gilmer Wood** now offers our club a 10% discount on purchases made there. If you haven't been to Gilmer's, it is well worth the trip to Portland, if only to make your mouth water and make you cry if you leave empty handed.

Club happenings in our area

(Please visit the club's website listed below for additional information)

Northwest Woodturners (Beaverton, OR)

www.northwestwoodturners.com

Cascade Woodturners (Portland, OR)

www.cascadewoodturners.com

Beaver State Woodturners (Eugene, OR)

www.beaverstatewoodturners.com

Oregon Coast Woodturners (Newport, OR)

www.oregoncoastwoodturners.com

Southwest Washington Woodturners (Vancouver, WA)

www.southwestwashingtonwoodturners.com

South Coast Woodturners (Coos Bay, OR)

www.southcoastwoodturners.com

The Burl is a monthly newsletter publication of the **Willamette Valley Woodturners**.

<u>Executive Board</u>		<u>Non-Executive Positions</u>	
President	Marc Vickery	Newsletter Editor	Brian Skaar
Vice President	Larry Curry	Webmaster	Jeff Zens
Secretary	Brian Skaar	Wood Gathering	Randy Nichols
Treasurer	Henrik Åberg	Librarian	Roger Dirx
Past President	Jeff Zens	Glue/Supply Sales	Jerry Lelack
Board Position 1	Bruce Stangeby	Steam-Up Coordinator	Jim Devorss
Board Position 2	Randy Nichols	Mentor Coordinator	Paul Hirt
		State Fair Coordinator	Marc Vickery
		Empty Bowls Coordinator	Darcy Tataryn
		Roster Editor	Henrik Åberg
		Facilities Coordinator	OPEN
		Video Coordinator	Marc Vickery
		CraftSupplies Order	Jeff Zens
		Beads of Courage	Mark Choitz
		New Member Coordinator	Steve Wolfenbarger

Send dues & other financial matters to:

Henrik Åberg

7231 Bethel Road SE

Salem, OR 97317

henrikeberg@gmail.com

Checks payable to: Willamette Valley Woodturners

Send changes to roster information (address, e-mail, phone#) to Henrik Åberg (henrikeberg@gmail.com)

Send all other club correspondence to the clubs official address:

P.O. Box 151

581 Lancaster Dr SE

Salem, OR 97317 PrezWVW@gmail.com

Club e-mail:

vwturners@gmail.com