

# The Burl

A monthly newsletter for the  
**Willamette Valley Woodturners**  
e-mail: [wwwturners@gmail.com](mailto:wwwturners@gmail.com)  
We are also on Facebook



Member chapter

Volume 28, Issue 12

A non-profit/501(c)(3) corporation

December, 2024

**Next Meeting: 6:00-8:30 PM, December 12, 2024  
Salem 50+ Center**



## **December President's Message:**

Well, Christmas is almost here. I hope you are all getting lots of turning time in making gifts for all of your friends and family.

While you are at it, make a couple of bowls for the Empty Bowls event at the Oregon

Woodturning Symposium which is now only 3 months away. These bowls will all be sold for \$25 so, unless you are feeling really generous, you probably don't want to donate a \$200 bowl. By the same token, we don't want to donate any \$10 bowls either. Just ask yourself if you would pay \$25 for it and, if the answer is yes, donate it.

Speaking of Empty Bowls, the event two weeks ago was a huge success. I don't know how many ceramic bowls were there, but we donated 55 wooden bowls and they were all sold by 2PM on Saturday. Thank you to all who donated, worked at the event, and demonstrated.

As mentioned earlier, we are only 90 days away from the OWS and could still use some volunteers. Remember, you don't have to be registered at the symposium to volunteer. We are looking for people to help with setup, to work the registration table, etc. Mark Choitz will have more information at our club meeting.

Also, there will not be a WVV meeting in March because of the overlap with the Symposium

See you all on Thursday!  
Larry

## **Year of Challenges from Chuck Fell**

Dec. Holiday ornament

Jan. Bowl with piercing/president's gavel

Feb. Vase with any type of enhancements

Mar. Lidded Box

April Goblet

May: Focus will be on feet; pieces can be new or old

June: Sphere

July Spinning top

Aug. Calabash Bowl

Sept. Wing Vessel

Oct. Anything with 3 woods

Nov. Platter or Plate

## **Dec. Xmas Ornament or holiday item**

Note: Enhance any project as you wish (ex. texturing, coloring, burning, piercing, etc)

## **Upcoming Presenters and Events**

<b><u>Date</u></b>	<b><u>Presenter/Event</u></b>	<b><u>Topic</u></b>
Dec 12	Jimmie Allen	Lidded box and tool sale
Dec 15	Sawdust Session	As needed: 9 AM-1 PM, Darcy Tataryn's Studio Wear your nametag and come learn or teach or practice or visit!

## **Sawdust Session Update**

Well, we tried a new schedule for quite a while, but it wasn't as successful as hoped. So, we're going back to what

we've done before albeit with an hour tacked on. As you can see in the chart above, the Sawdust Session will run from 9AM to 1PM with cleanup beginning about 12:30. This gives Darcy some of the day to keep and will hopefully focus us as guests.

For those wondering: there is no set time to be there or when to leave, but we all gotta be out by 1PM. Some are better than others at wearing our name tags (best not to have them hanging though) and they really help. I'd appreciate it if someone would remind me when I forget...

Having your own tools is a good idea, but not required (the only requirement being you must be a WWW member). Mentors can help with the sharpening of them and you can learn with the tools you'll use on your own. If you don't have tools or want to try other tools, there are usually club tools available for use.

Come with questions about projects or skills and usually a mentor can help!



### **December presenter: Jimmie Allen**

Jimmie Allen is a long-time northwest resident and currently resides in Bremerton, WA. Jimmie discovered woodturning during his semi-retirement as a finish carpenter. He joined the OPCAOW club in 2003 and was instantly hooked - he went on to serve 7 years as the club's Vice President of Training.

After experimenting with various wood turning aspects, Jimmie was drawn to the challenge that wood boxes presented. Since then, he has concentrated his efforts on improving technique, wood selection, design/shape and proportion. Through this journey, Jimmie also found another creative outlet - the design and crafting of box making tools that helped him to create his signature style of boxes. He is also the owner of D-Way Tools.

Jimmie's philosophy is that we all start at the same place and it's important to keep it simple - "If you put in the time, you'll get there". He appreciates the opportunity to encourage and motivate people by sharing his experiences and techniques through demonstrations and sawdust sessions.



### **🎄 Santa's bringing a sleigh full of goodies early! 🎁**

We wanted to do something special for your club, so during our visit on December 12th we will be having a club sale for those in attendance. With only a couple of exceptions\*\*, we will have 10% off all tools on hand at the club demonstration. This will also include CBN Wheels. \*\*Discount does not apply to Hollowing Tools & Cutters; Boxmaster Tools; Handle Inserts; or DMT products\*\*

- Tools will be set up and ready for purchase at 5:30pm.
- Due to increased credit card processing fees - cash or check payments would be appreciated.
- We are accepting pre-orders, so feel free to contact us and we will put them together for you ahead of time (especially CBN wheels). That way we don't run out of something you want.

Thank you for your continued support,  
Jimmie & Cindy / D-Way Tools  
Email: [jimmie@boxmastertools.com](mailto:jimmie@boxmastertools.com)  
Phone: 360 689-4541

---

### **December OWS Newsletter** (fm Mark Choitz)

With only **102 days** remaining until the 2025 Oregon Woodturning Symposium, excitement is building!

#### **The Spirit of Giving This December**

As we embrace the season of giving, I've penned a few wishes that might inspire you as well.

#### **1. Turn a Bowl, feed a Family**

Join us in supporting the **Empty Bowls program** benefiting the **Linn Benton Food Share**. By donating a turned bowl,

you can help feed a family during a time of need. For **every dollar donated**, Linn Benton Food Share provides the equivalent of **six meals** to individuals and families.

Our goal is to collect **100 bowls** at the Symposium, each sold for **\$25**

Contributors will receive a **\$10 Craft Supplies USA gift certificate**.

Each bowl donated enters you into a drawing for one of three **\$50 Craft Supplies USA gift cards**.

Thank you in advance for bringing your turned bowl to the OWS and making a difference!

## **2. Give the Gift of the Symposium**

Do you know someone who dreams of attending the Symposium? Make their wish come true with registration! For just **\$325**, they'll enjoy a weekend full of:

- Woodturning demonstrations.
- Tool displays and shopping.
- Delicious meals.
- Connections with a community of turning enthusiasts.

Imagine the joy and surprise on their face when they receive this thoughtful gift!

## **3. Volunteer and Be Part of the Magic**

Help make the Symposium a success by volunteering. With over **900 hours** of help needed, there's a role for everyone:

- **Non-registered individuals** can assist with **Registration**, the **Instant Gallery**, or **Event Setup**.
- **Registered attendees** can volunteer as **videographers** or **room monitors** in demonstration classrooms, offering up-close access to the professionals.

Volunteers will receive an **OWS T-shirt** and help their local club's stipend grow. Whether you're attending or supporting from behind the scenes, your efforts are invaluable.

Together, let's celebrate the season of giving by turning bowls, making memories, and giving back. Thank you for being a part of the Oregon Woodturning Symposium – 2025!

**‘T was The Evening Before the SYMPOSIUM and all through the SHOP**

**Not one LATHE WAS TURNING, not even A TOP**

**The WOODTURNERS were all TUCKED in their BEDS**

**While VISIONS of NEW TOOLS danced in their HEADS**

**When out in the WOODS there arose such a CLATTER**

**I got off my cot to see WHAT WAS THE MATTER**

**The MOON ON THE CREST of the new FALLEN SHAVINGS**

**Showed the IMAGE OF A TURKEY to go with my CRAVINGS**

**Then I saw THE OLD SAINT checking his LIST**

**What was for ME? I knew WHAT I WISHED**

**Then to my SUPRISE when he made his grand CALL**

**EVERYONE was pronounced GOOD! - SHARP SKEWS for us ALL !**

**Now Kevin, now Craig, now Dan and Trent**

**On Elizabeth, Michael, on Dave and Laurent**

**With Dave and Curt and Kimberly Winkle**

**They FLEW the SLEIGH off with the SOUND of a TINKLE**

**And WE could HEAR throughout the FLIGHT**

**MERRY CHRISTMAS to ALL, and to ALL a GOOD NIGHT !**

---

## **November Meeting Notes:**

**President Larry** called the meeting to order at 6:30 followed by the Pledge of Allegiance.





60 folks were in the room including 7 guests (2 of whom were members from long ago) and 2 new members.

### **Announcements:**

**Marc V.** reminded folks of the upcoming Empty Bowls event and passed around a sign up. Pricing of bowls would be done at the end of the Sawdust Session. (see note and pics below)

**Larry** reminded folks the OWS was coming up and of some of the needs associated with the event. Larry also reviewed the Sawdust Session offerings and protocols for guests and new members.

**Jeff Z** reviewed the standing of the Craft Supplies order. It was low at the time. (\$550 as of this writing)

**Larry** reminded us that dues are due by the end of December and remain at \$35 as voted on in November (\$40 if paying by PayPal)

Larry opened up nominations for board members. With no new nominations and all current members eligible for another year, the current board was voted in.

Larry also let us know that recently passed Sam Sapp donated a lot of wood to WVW and to contact him (Larry) for more info.

**Darcy** took the group through the gallery (see pics below).



### **Presenter: Kevin Jesequel**

*Kevin has been with us before demoing a hollowform with a void in the side. He's become a sought after presenter by many clubs and events and will be featured at the OWS in March. Always fantastic!*

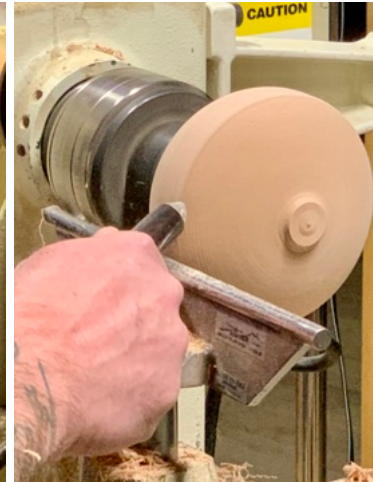
Kevin's goal was to turn a smallish 4" sidegrain hollowform with a "fingertip" opening. Very small. Like 1/2" small...

To feature the grain, he likes sidegrain vessels for short pieces and endgrain for taller ones. Kevin started with the block between centers with his drive center being a OneWay safety drive-no spurs! He said he uses this drive on pieces up to 8 or 9 inches. He likes that a catch will do almost no damage to the piece as it will instantly stop spinning.



Above: the point of the safety drive is spring loaded; truing the blank with steep angled bevel supported shear cut  
Below: making the tenon by plunging sideways toward the headstock; tenon has another shoulder above that gives room for shaping later in the process; 3rd pic shows blank chucked up in tower jaws being trued with lathe running about 900 rpm; right pic shows beginning shaping of opening with a short lip for strength and appearance



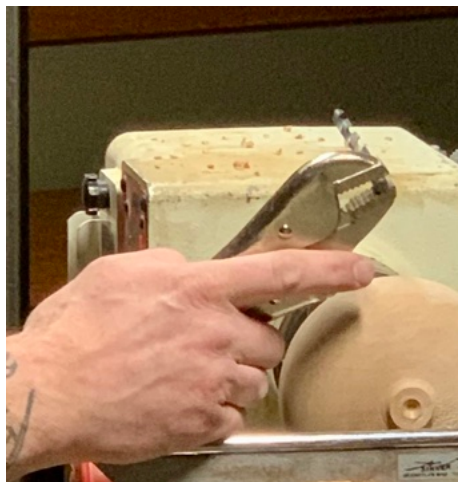


Above: widest part of vessel is  $\frac{1}{3}$  down from top; shaping done with handle against hip and steered with whole body; closed flute for light shear scraping; shape much of lower  $\frac{2}{3}$  of vessel at this time as well leaving material for stable base for hollowing-blend the top and bottom with lathe at 1000-1100 rpm (lots of blending...)

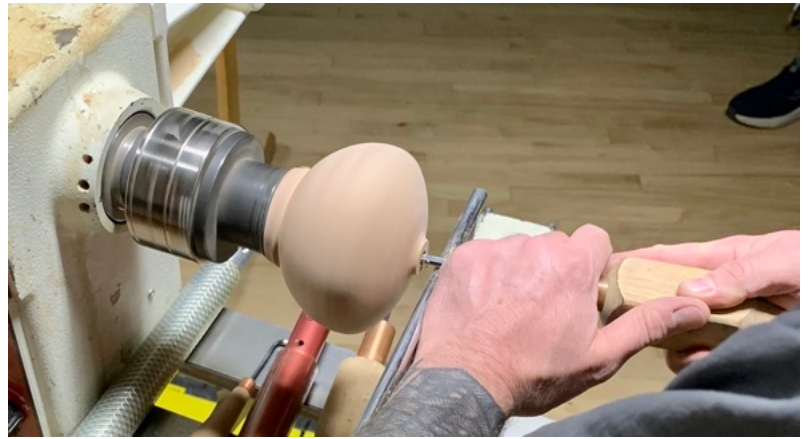
\*\*At this point Kevin recommends walking away and taking a break. When he returns he often sees things to refine further\*\*

\*\*Also, he uses a flat edge (metal ruler) to *roll* over the surface bottom to top and top to bottom to find tiny flat spots to refine\*\* (Really works well!!)

Below: two styles of drills... drill close to bottom inside (not the time to go deep...)



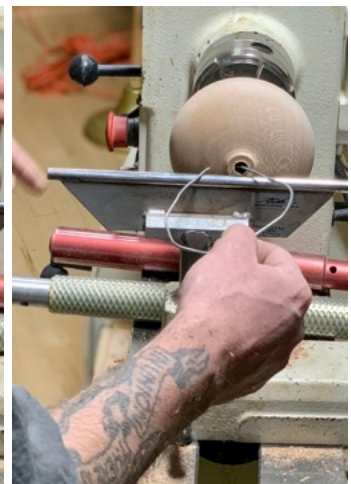




**\*\*At this point Kevin slid the headstock toward the tailstock end of the ways for better body positioning.\*\***

Above: one of **many** of Kevin's homemade turning tools made from allen wrenches (He makes these from black ones-not silver as silver ones are too soft. He uses a cutoff wheel to shorten the "hook" and then makes simple handles for them.) used to carefully open the vessel around the opening (notice tower jaws as well) used to carefully open the vessel around the opening (notice tower jaws as well)

Below: the goal of the first shaping; Kevin recommends blowing out chips often as then can really grab the tool inside

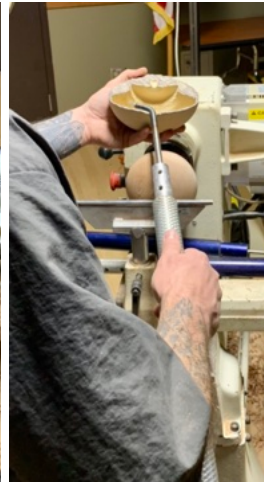


Above: continue hollowing a sort of cylinder inside-lathe running at 1000+ rpm; Kevin's homemade heavy wire thickness gauge; He was going for about  $\frac{1}{4}$ "; Kevin said to tuck the handle under your arm and use body to control tool-there will be lots of vibration and chatter.

**\*\*Kevin recommended checking fit of each larger/longer gouge with lathe off, but to have the tool out and lathe running when actually intending to cut (starting the lathe with tool inside is not good...)\*\***

Below: much of the hollowing to this point is done with a straight  $\frac{1}{4}$ " scraper





Above: Kevin can feel where he's at; moving on to longer bent tool

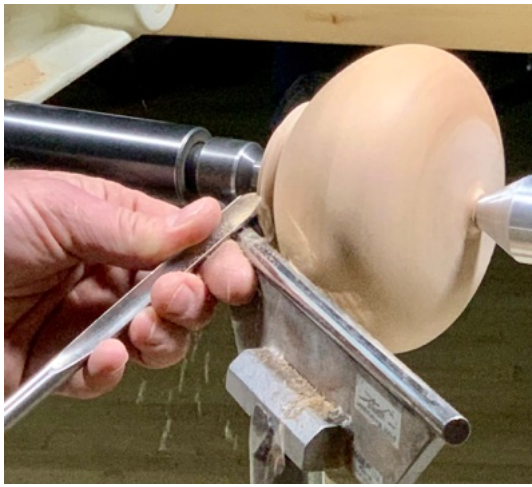
**\*\*He likes to use a bent tool to cut the base saying he gets a better feel than with a straight tool\*\***

Below: final *very light* shear scraping; vessel out of chuck with headstock back to original spot and safety drive and cone center installed

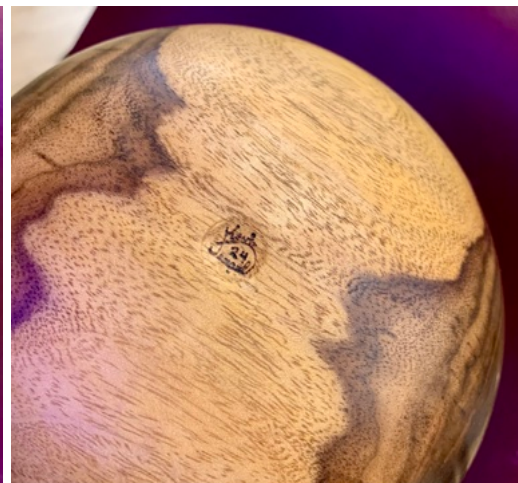


**Below:** specialized bottom thickness gauge; vessel is mounted gently for careful shaping of bottom (the piece was very thin)





Above: the piece turned in demo; the foot is carved using the curved chisel shown below





Below: Kevin's homemade tools-the tips are made from 3/16" M2 bar stock; he gets 3" pieces for about \$2 (I missed how he attaches them to the shafts-looks like they are brazed into a hole)



Kevin does no sanding inside (couldn't get my finger in there!).

He uses a variety of finishes from CA, to Tried and True to Danish oils. He sands to 1000 and does use a buffing system.

*Thank you again, Kevin! I think a class on making both the tools and the vessels would be fantastic!*

## November Gallery



Above: Tom Huhn; Warren Gookin  
Below: Jim Devorss; Dave Pitman; Chris Burke







Above: Dave Pitman; Chris Burke  
Below: Brian Skaar; Shelly



Below: Brian Skaar; Shelly



### **November Sawdust Session**

Well, about 20 folk took part in the session! Pretty good. Lots of turning and learning including buffing, threading, and pen making.

Thank you to all that helped with the Empty Bowls pricing and touch up. Lots of laughs and good humor.







## **Empty Bowls** (from Brian)

Well, it seemed to go well to me! Marc Vickery once again had us expertly organized and the folks who came did their part with knowledge and humor and the reception was excellent.



Marc donated a HUGE bowl for the raffle. I haven't heard how that part went but saw quite a few tickets being put into the can for it.









---

## Oregon State University Visit (from Mark Choitz)



Have you ever considered going back to school? We hadn't either—until Brian and I had the chance to explore the woodturning program at Oregon State University. Dr. Seri Robinson, author of “Spalting 101: The Ultimate Guide to Coloring Wood with Fungi”, gave us an inspiring tour of the university's woodturning lab, which is outfitted with top-notch equipment—truly a dream space for anyone interested in woodworking!

OSU offers four woodturning classes through

Dr. Robinson's department, ranging from Woodturning with Science 1 to Integrated Sculptural Woodturning. These courses

fall under the broader

field of wood sciences, which teaches students about the properties, features, and uses of different wood species. Students learn everything from basic tool use and sharpening to the history of woodturning, how to develop their own style, and how to market their creations.

We had the chance to observe a group of students working hard on their end-of-term projects. Many students continue with woodturning after they graduate—whether as a hobby or even a career. One student we spoke to is successfully applying the skills she learned to design, create, and sell her pieces at regional craft fairs. Another student returned to school after a career in construction to explore his creative side through woodturning.

If you know any high school grads who are interested in exploring woodturning, this program at OSU is a fantastic opportunity to get started. Most of the students come in with little to no prior experience, but under Dr. Robinson's guidance, they quickly gain the skills they need to succeed. We'd love to see some of these students attend the Oregon Woodturning Symposium, and a few of them have already expressed interest. We did discuss some of the challenges that prevent students from attending local club meetings, like transportation and scheduling issues. If you happen to see any students at the Symposium this March, be sure to welcome them and make them feel at home!



---

## Membership Rewards

**Chain Sharpening Service** from Jeff Zens: I have an electric chain sharpener and can accurately sharpen your



chains and adjust depth stops for your saw chains. This service will restore the chain to “factory-new” condition. Most chains for 18" and shorter bars can be sharpened for \$10.00. Longer chains (up to 30" bars) are \$20.00. Badly damaged chains might be a little bit more. I will also tell you if the chain has reached the end of its useful life, and will not sharpen a chain beyond that point. This price is only available for club members.

### **Supplies-See Jerry Lelack at club meetings**

The club purchases a few supplies in bulk and sells them to members at club cost.

\*CA superglue (\$8), black or brown superglue (\$10) accelerator (\$16).

\*Half round protractors (\$6) used to measure the angle ground on a tool

\*Depth gauges (\$5)

\*HSS 1/4" x 8" Round Tool Bits rods

\*Anchorseal (\$9/gal) and walnut oil (\$20/gal) are available through **Jeff Zens**. You will need to bring your own gallon containers; contact [Jeff](#) to make arrangements.

### **Wood Gathering**

Anyone who learns of a tree or log that is available to the club should notify **Randy Nichols**.

### **From Terry Gerros**

I am a distributor for Stick Fast CA glue, Sharpfast Sharpening systems, the Holdfast vacuum chucking system and Saburrtooth Carving bits. If you have an interest in these products, give me a call or send me an [email](#) for details.

### **Club Member Discounts**

- **Club Member Discounts at Craft Supply:** The club's order is processed the Monday following our Club meeting if it equals or exceeds \$1,000. Craft Supplies offers us a 10% discount **plus** free shipping on almost all items (lathes and other heavy items are excluded) and occasional additional discounts on certain other items and quantity purchases. If you order from Craft Supplies current sale items, you will receive the club discount in addition to the sale discount, making many items available at very attractive prices. For detailed instructions for ordering, see the article accessed by clicking on “*read this document first*” which is linked to on the Place Group Order page in the Members Only part of our website. Questions? See [Jeff Zens](#).
- Club members are registered with **Klingspor's Woodworking Shop** at [www.woodworkingshop.com](http://www.woodworkingshop.com) or 800-228-0000. They have your name and will give you a 10% discount.
- **Exotic Wood** is offering a discount of 15% off any orders placed at: [www.exoticwoodsusa.com](http://www.exoticwoodsusa.com). (This includes sale items and free shipping on orders over \$300). Use promo code ewusaAAW
- **Gilmer Wood** now offers our club a 10% discount on purchases made there. If you haven't been to Gilmer's, it is well worth the trip to Portland, if only to make your mouth water and make you cry if you leave empty handed.

### **Club happenings in our area**

(Please visit the club's website listed below for additional information)

**Northwest Woodturners** (Beaverton, OR)

[www.northwestwoodturners.com](http://www.northwestwoodturners.com)

**Cascade Woodturners** (Portland, OR)

[www.cascadewoodturners.com](http://www.cascadewoodturners.com)

**Beaver State Woodturners** (Eugene, OR)

[www.beaverstatewoodturners.com](http://www.beaverstatewoodturners.com)

**Oregon Coast Woodturners** (Newport, OR)

[www.oregoncoastwoodturners.com](http://www.oregoncoastwoodturners.com)

**Southwest Washington Woodturners** (Vancouver, WA)



**South Coast Woodturners** (Coos Bay, OR)

[www.southcoastwoodturners.com](http://www.southcoastwoodturners.com)

---

**The Burl** is a monthly newsletter publication of the **Willamette Valley Woodturners**.

<u><b>Executive Board</b></u>		<u><b>Non-Executive Positions</b></u>	
President	Larry Curry	Webmaster	Jeff Zens
Vice President	Kip Allen	Newsletter Editor	Brian Skaar
Membership Director	Jeff Wimer	Wood Gathering	Randy Nichols
Secretary	Chris Burke	Librarian	Roger Dirkx
Treasurer	Dick Powell	Glue/Supply Sales	Jerry Lelack
Past President	Mark Vickery	Steam-Up Coordinator	<b><u>OPEN</u></b>
Board At-Large	Mark Choitz	Mentor Coordinator	Paul Hirt
		State Fair Coordinator	Kip Allen
		Empty Bowls Coordinator	Darcy Tataryn
		Facilities Coordinator	<b><u>OPEN</u></b>
		Video Coordinator	Marc Vickery
		CraftSupplies Order	Jeff Zens
		Beads of Courage	Mark Choitz
		Benton Co Fair	Brian Skaar
		OWS	Mark Choitz

Send dues & other financial matters to:

Dick Powell

8110 NW Oak Creek Dr

Corvallis, OR 97330

[rlpowellsaf@gmail.com](mailto:rlpowellsaf@gmail.com)

Checks payable to: Willamette Valley Woodturners

Send changes to roster information (address, e-mail, phone#) to Dick Powell ([rlpowellsaf@gmail.com](mailto:rlpowellsaf@gmail.com))

Send all other club correspondence to the club's official address via Dick Powell:

8110 NW Oak Creek Dr

Corvallis, OR 97330

Or via email to:

[wwwprez2024@gmail.com](mailto:wwwprez2024@gmail.com)

or

[wwwturners@gmail.com](mailto:wwwturners@gmail.com)