

# The Burl

A monthly newsletter for the  
**Willamette Valley Woodturners**

e-mail: [wwwturners@gmail.com](mailto:wwwturners@gmail.com)

We are also on Facebook



Member chapter

Volume 29, Issue 12

A non-profit/501(c)(3) corporation

December, 2025



**Next Meeting: 6:30-8:30 PM, December 11, 2025  
Salem 50+ Center**

## **December President's Message:**

Well, Christmas is getting close and I assume that your lathes are humming as you finish those Christmas gifts.

I am hoping to get in my shop to make a few ornaments.

Remember that the December meeting will be informal with no demonstration. The agenda will be our normal introduction with

announcements followed by show and tell, followed by desserts, and social interactions (read BS session).

The club will provide Coke, Coke Zero, water and coffee. If you would like something else to drink please bring it with you. There will also be cups, small plates and plastic silverware.

Please bring the dessert of your choice to share with the group.

Also, Sally Ault will be our demonstrator in January followed by Saturday and Sunday classes. If you have never seen Sally this is a great opportunity. She is a good turner and a very good demonstrator. Sign up soon before all of the slots are gone.

This will be my final meeting as President and I want to take this opportunity to thank you all for allowing me the honor of serving in that position for the last two years. I would encourage you to provide Kip the great support that you have shown me.

See you Thursday.

Merry Christmas!

Larry G. Curry

## **Year of Challenges from Chuck**

### **Fell: 2025**

January: Cereal Bowl or Porringer

February \* Hollow Form

March \* Plate or Bowl with 4 square edge

April \* A turning which has a charred finish

May \* 3 Legged Vessel

June \* Redo an old turning

July \* Something with live edge

August \* For the kitchen (or grill or...cooking theme)

September \* Candle stick holder off axis

October \* Something way outside your comfort zone

November \* Miniature form no larger than 2" x 2"

**December Bring any item(s) to help  
create an "Instant Gallery" of best  
works. Can be recently done or  
something from way back!**

## **Upcoming Presenters and Events**

| <b><u>Date</u></b> | <b><u>Presenter/Event</u></b>         | <b><u>Topic</u></b>  |
|--------------------|---------------------------------------|--|
| Dec 11             | Dessert Potluck and best work display | Bring a dessert and a friend and/or family member for a relaxing social evening. Also bring one or more of your favorite/best turnings. Does not matter if it was recently made or from earlier in your turning journey! Let's create our own instant gallery of pieces from our own club members! |

|           |                    |   |
|-----------|--------------------|---|
| Dec 14    | Sawdust Session    | As needed: 11AM-2PM, Darcy Tataryn's Studio<br>Wear your nametag and come learn or teach or practice or visit!<br><i>Please note this is a time change. We'd like to see if this makes the session more accessible to members.</i>  |
| Jan 8     | Sally Ault         | Dirty Pour lids   |
| Jan 10-11 | Sally Ault classes | Saturday's class, members will make their own dirty pour lids and possibly lidded bowls.<br>Sunday, members will learn texturing techniques as well as making a texturing tool and possible lidded boxes<br><i>Please note there won't be a typical Sawdust Session in January.</i> |
| Feb 12    | Rick Rich          | Turmkreisel spinning top and tower  |
| Feb 15    | Sawdust Session    | As needed: time TBA, Darcy Tataryn's Studio<br>Wear your nametag and come learn or teach or practice or visit!  |

### **November Meeting Notes:-Brian**

**President Larry** gavelled the meeting to order at 6:30, followed by the recitation of the Pledge of Allegiance. 42 people including 2 guests and 2 new members were in attendance.

Larry presided over the annual board elections, first announcing the nominees and inviting any others who wished to run for office to speak up. By a voice vote on the slate the following were elected and are eligible for up to 2 years serving in their positions:

President: Kip Allen

Vice President: Brian Skaar

Secretary: Terry Gerros

Member at Large: Jerry Lelack

Membership Director: Mark Bollenbeck

Treasurer: Jeff Wimer (not term limited)

Larry reminded the club of the tradition of making gavels for the incoming president to choose from for use during their tenure.

**Darcy** brought up the question of the Sawdust Session time frame wondering if an adjustment would make the session accessible to more people. Two ideas posited were moving the time to later and alternating months with one month being in the morning and the next being in the afternoon. Folks were invited to give input to Darcy or any board member. (See note above about the change for this month)

**Larry** reminded folks that **dues are due for 2026!** Checks made to WWV can be brought or sent to Jeff Wimer. Cash can be submitted to Jeff and a meeting. Dues can also be paid via PayPal on line (a small fee is added).

**Gallery:** **Chuck** reminded folks of the gallery goal for the December meeting and then took us through the pieces brought in. The challenge was tiny turnings (under 2") and some were indeed tiny! I should have taken the pics with something to reference just how small they were...



Above: Brian Skaar

Below: Paul Hirt's tiny bowl and top, Terry Gerros (bleached maple and maple sphere) (How...?)



Above: Rick Jarosz, Chuck Fell

Below: Jim Devorss





Above: Jesse Hibert, Marc Vickery  
Below: Darcy Tataryn, Jesse Hibert



Above: Rick Jarosz, Brian Skaar  
Below: Brian Skaar, Darcy Tataryn (*in the style of Yann Marot's rope bowls*)





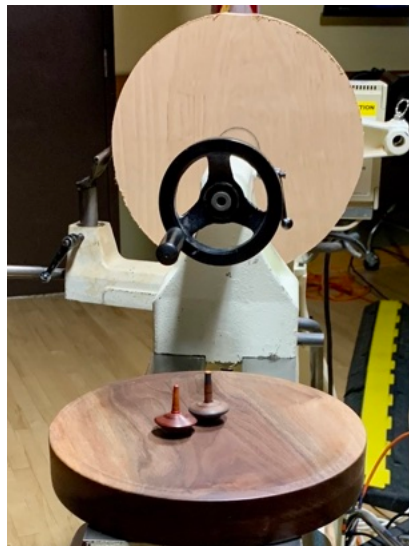
Above: Kip Allen  
Below: Brian Skaar, Philomath MS student pieces



### **November Demo-Darcy Tataryn top game**

Reed Gray, our scheduled demonstrator, had to cancel his visit last minute. Fortunately, Darcy was able to step in and show us how he makes his top game. Darcy showed this project in Jan 2022. He said he's since made numerous improvements and was happy to share them with us. He also said this is an extremely successful piece to sell at events.

Darcy started by saying he's demoed this project at numerous clubs where he gets to see their processes and said they all struggle as we do to get folks to take leadership roles. He encouraged members to give it a go when they get a chance!



Above: Darcy showed how the game has two sides-the top is for a single top to knock bb's into the side holes for scoring; the bottom for battle top vs top; He said he's found that blanks at least 12" work well for cutting a channel, but has made the game as small as about 8" with just holes.

Below: examples of different styles and top with its laser cut "gear" which knocks the bbs well.



Above: The blank turned was about 2" thick, but Darcy prefers 2 1/2-3". After truing the edge, he made a tenon and then the bottom playing field saying a gentle, slightly concave surface with a bit of an edge works well.

After reversing the piece and chucking it up he began on the top. His channel is about 1 1/2" wide.





The playing field is  $\frac{1}{2}$  to  $\frac{3}{4}$ " deep with the edges being undercut (so the bbs will be kicked back into the center when then don't go into the side holes). Darcy recommended you take the piece off the lathe (but still in chuck) and test it to see how it plays. Too dished and too flat don't work well as well as having a slight channel near the edge (might not let the bbs roll back to the center).



Darcy said he drills the  $\frac{3}{8}$ " sideways holes first for both the solid and channel versions. With the channel version he uses a brad point bit and drills until it just breaks the surface so that when he cuts more of the channel there is no blowout. The sideways holes angle down slightly to the scoring holes.





The little lidded box to store the bbs has a magnet glued into the bottom for easy collecting of the bbs. He said the inside hole cannot be very deep, nowhere near the magnet, as the bbs become magnetized and clump together during play. For the scoring holes, Darcy has used both laser engraved numbers and coins. The examples he brought had 8 holes on the smaller ones and 16 on the largest.



*Thanks so much Darcy! You've clearly refined your design and improved it a great deal!  
The opportunity to show off the wood and do unlimited profiling and enhancements make this an excellent project for anyone to give a try!!  
And thanks for being willing to step in when the club needed you.  
-Brian*

**Sawdust Session:** Wow! We had a great turnout at the November session! A couple visitors from another club stopped by to see how things went was neat as well as projects turning all over the studio.  
-Brian







## **A New Tool - And a Possible New Service?**

### **Jeff Zens**

I really like using sharp tools - and I really dislike dull ones. It doesn't matter if the tools are chisels and plane irons for furniture work, gouges and skewers for the lathe, or drill bits. With reference to the latter, I have used a Drill Doctor to try and touch up my bits rather than replace them. The results were okay, but no better than that.

For months I have been reading reviews and watching videos of a tool sold by Vevor for sharpening bits and splitting their points, a task the Drill Doctor attempts but does not do well. The reviews were uniformly positive, and the results looked pretty good. The price tag put me off - but eventually I took the plunge. I am glad I did, because the results have been really good.



The tool I purchased is the model MR-13B. The sharpening capacity is 3-13 mm, which is about 1/8" to just over 1/2". It comes with two grinding wheels, CBN for HSS bits and synthetic diamond for carbide bits. Grinding angles are adjustable from 95 to 135 degrees. The machine is capable of point splitting, and does a really good job of it. If anyone is curious about that sharpening technique ask me and I will explain it, but not in this brief article. If you have ever had a drill bit wander all over your material (especially when hand-drilling) you'd appreciate a split point bit.

The overall results, after sharpening my entire drill index, range from pretty good to excellent. The "pretty good" results are on the smaller bits in a standard drill index. Sharpening any bit over 3/16" offers results as good or better than brand new. Tiny bits (in the 1/32" +/- range) are best replaced when dull.

This tool cost \$240, which might be more than most folks would probably care to spend to sharpen drill bits. If you're thinking about sharpening your own, this tool is great. And I

happen to have a Drill Doctor for sale, as well.

One last thought: if you have a lot of bits that need a new grind, get in touch with me.

**HS class #3** About 10 kids attended this version where we made spatulas. Half the kids were able to make 2 or more and all came away with nice looking utensils. Darcy had a couple belt sanders and I brought another for final shaping and it worked out great. A couple kids liked the sanders more than the lathes... Kudos to Darcy again for organizing and to Jeff Z, Marc V, and, well, me, for helping out!

*-Brian*



### **Kikok Denzer visit to PMS**

Some of you may recall seeing Kiko at the OWS last March with his foot powered lathe. I was pretty amazed at how well he made it work, especially after trying it myself!

Ben Silva at Philomath MS arranged to have him visit 3 classes one morning. Kids got to see it used, ask questions, and then give it a try! Ben easily improved the most as the kids egged him to give it a try every class. Good stuff!

*-Brian*





**Not turning, but still amazing...** I read an article in our local news about this fellow Charles “Woody” Woodside who had recently passed but not before striking up a friendship with a neighbor and sharing his collection of carvings. No one in the area knew about them. I think she told me he had over 150 of these in his barn!

Linda and I went to a showing and heard more of this remarkable story of dedication and discovery.

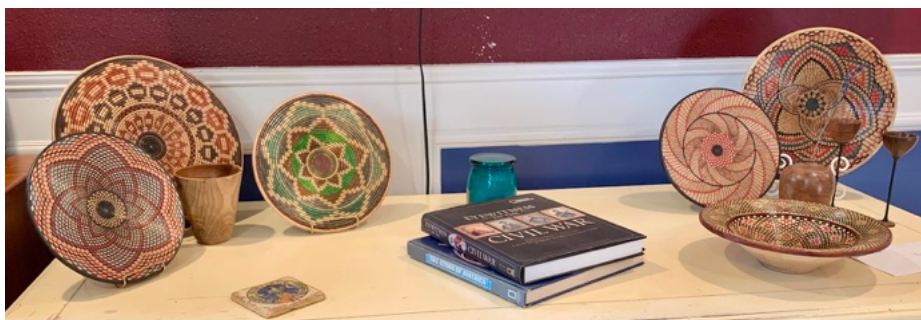
Here’s the link if you’d like to read more

<https://philomathnews.com/art-show-brings-reclusive-wood-sculptors-work-out-of-the-shadows/>

-Brian



**A visit with Kip Allen!** So I headed over to Kip’s place to get some advice on how to do this VP stuff and had a great visit. He’s got a wonderful shop and homestead on a beautiful chunk of land with a great view. Good time!

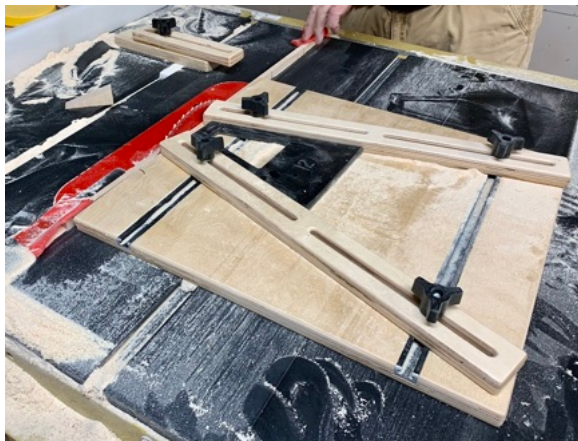


Above: Some of his beautiful pieces on display (we’ve only seen a small percentage!)

Below: Kip in his “coloring chair”, his grinder set up for sharpening his beading tools, his HUGE indexing wheel and burning jig (the wheel is actually cut into the table top!)



Above: Kip's sweet sit-down lathe and segmented glue up station  
Below: His segment cutting sled and wall o' chucks (half empty as the others are on projects)



-Brian

### **Lathe for sale for a very good price!!**

My Grizzly G0462 lathe needs a new home. It's about 11 years old and recently had new pulleys installed. This model uses a Reeves-drive system, and the slowest speed is around 1500 RPM. It's free if you can use it.

You'll need to pick it up in Corvallis and bring tools to disassemble it, along with a pickup or suitable vehicle for transport and a helper - I am on crutches. For the right turner, it still has plenty of life left.

If you're interested, give me a call or text.

Mark Choitz  
541 250 7792



## Wood to share:

I'm a new member and attended my first meeting this month. I just got some black locust rounds. 6 to 12+ " by 16" long. Down less than a month and in good shape.

I'm willing to share some.

I'll be available frequently in the next week or so.

Bill Hughes. 503 580 8711. Text only as I won't pick up an unknown number.

**What's on my lathe!** To the right: We begin with Kip and his creation of the fanciest funnel ever. Said it happened during beading and that he "got a little thin..." Oops!



Left: Jeff W has got a BIG resin piece in the works!



Don't know where he got this idea, but Rick J decided to make a colander! As well as hand carve a Celtic knot rim.



And George L has been getting after hollowforms and a couple bowls for good measure!



I got after some offset turning.  
What could go wrong!?  
-Brian



---

### **And finally, some holiday cheer!**

-From Mark Choitz

Must be read with a dramatic flourish and many times!

'Twas the night before Christmas, and all through the shop,  
Not a bowl blank was spinning—no chips dared to drop.  
The gouges were resting, the face shields were hung,  
And the shop-vac, for once, didn't sound like it sung.  
The blanks were all stacked by the chimney just right,  
When suddenly—WHIRRR—came a sound in the night.  
I peeked in the workshop and what did I see?  
A jolly old turner grinning back at me.  
Covered in shavings from his head to his shoe,  
He trued up a bowl like the pro turners do.  
He sanded, he finished, he polished it bright,  
Then noticed it was a very late night.  
Then laying a finger aside of his nose—  
He clicked off the lathe and up the chimney he rose.  
But I heard him exclaim as he vanished from sight:  
“Merry turning to all—and to all a good night!”

---

## **Membership Rewards**

**Chain Sharpening Service** from Jeff Zens: I have an electric chain sharpener and can accurately sharpen your chains and adjust depth stops for your saw chains. This service will restore the chain to “factory-new” condition. Most chains for 18" and shorter bars can be sharpened for \$10.00. Longer chains (up to 30" bars) are \$20.00. Badly damaged chains might be a little bit more. I will also tell you if the chain has reached the end of its useful life, and will not sharpen a chain beyond that point. This price is only available for club members.

### **Supplies-See Jerry Lelack at club meetings**

The club purchases a few supplies in bulk and sells them to members at club cost.

\*CA superglue (\$8), black or brown superglue (\$10) accelerator (\$16).

\*Half round protractors (\$6) used to measure the angle ground on a tool

\*Depth gauges (\$5)

\*HSS 1/4" x 8" Round Tool Bits rods

\*Anchorseal (\$9/gal) and walnut oil (\$20/gal) are available through **Jeff Zens**. You will need to bring your own gallon containers; contact [Jeff](#) to make arrangements.

## **Wood Gathering**

Anyone who learns of a tree or log that is available to the club should notify **Marc Vickery**.

## From Terry Gerros

I am a distributor for Stick Fast CA glue, Sharpfast Sharpening systems, the Holdfast vacuum chucking system and Saburrtooth Carving bits. If you have an interest in these products, give me a call or send me an [email](#) for details.

## Club Member Discounts

- **Club Member Discounts at Craft Supply:** The club's order is processed the Monday following our Club meeting if it equals or exceeds \$1,000. Craft Supplies offers us a 10% discount **plus** free shipping on almost all items (lathes and other heavy items are excluded) and occasional additional discounts on certain other items and quantity purchases. If you order from Craft Supplies current sale items, you will receive the club discount in addition to the sale discount, making many items available at very attractive prices. For detailed instructions for ordering, see the article accessed by clicking on "*read this document first*" which is linked to on the Place Group Order page in the Members Only part of our website. Questions? See [Jeff Zens](#).
- Club members are registered with **Klingspor's Woodworking Shop** at [www.woodworkingshop.com](http://www.woodworkingshop.com) or 800-228-0000. They have your name and will give you a 10% discount.
- **Exotic Wood** is offering a discount of 15% off any orders placed at: [www.exoticwoodsusa.com](http://www.exoticwoodsusa.com). (This includes sale items and free shipping on orders over \$300). Use promo code ewusaAAW
- **Gilmer Wood** now offers our club a 10% discount on purchases made there. If you haven't been to Gilmer's, it is well worth the trip to Portland, if only to make your mouth water and make you cry if you leave empty handed.
- **Taylor Woodworks** offers 10% off your online order. Enter **Guild10** in the "Discount code or gift card" window when checking out.
- **Rockler** offers 10% off with a mention of membership to WVVW as well.

## Club happenings in our area

(Please visit the club's website listed below for additional information)

**Northwest Woodturners** (Beaverton, OR)

[www.northwestwoodturners.com](http://www.northwestwoodturners.com)

**Cascade Woodturners** (Portland, OR)

[www.cascadewoodturners.com](http://www.cascadewoodturners.com)

**Beaver State Woodturners** (Eugene, OR)

<https://beaverstatewoodturners.org/>

**Oregon Coast Woodturners** (Newport, OR)

[www.oregoncoastwoodturners.com](http://www.oregoncoastwoodturners.com)

**Southwest Washington Woodturners** (Vancouver, WA)

<https://www.southwestwashingtonwoodturners.org/>

**South Coast Woodturners** (Coos Bay, OR)

[www.southcoastwoodturners.com](http://www.southcoastwoodturners.com)

---

**The Burl** is a monthly newsletter publication of the **Willamette Valley Woodturners**.

| <u><b>Executive Board</b></u> |             | <u><b>Non-Executive Positions</b></u> |           |
|-------------------------------|-------------|---------------------------------------|-----------|
| President                     | Larry Curry | Webmaster                             | Jeff Zens |

|   |  |  |  |
|---|--|--|--|
| Vice President<br>Membership Director<br>Secretary<br>Treasurer<br>Past President<br>Board At-Large | Kip Allen<br>Jeff Wimer<br>Terry Gerros<br>Jeff Wimer<br>Mark Vickery<br>Mark Choitz | Newsletter Editor<br>Wood Gathering<br>Glue/Supply Sales<br>Steam-Up Coordinator<br>Mentor Coordinator<br>State Fair Coordinator<br>Empty Bowls Coordinator<br>Facilities Coordinator<br>Video Coordinator<br>D-Way Order<br>Beads of Courage<br>Benton Co Fair<br>OWS | Brian Skaar<br>Marc Vickery<br>Jerry Lelack<br><b><u>OPEN</u></b><br>Paul Hirt<br>Kip Allen<br>Darcy Tataryn<br><b><u>OPEN</u></b><br>Marc Vickery<br>Jeff Zens<br>Mark Choitz<br>Brian Skaar<br>Mark Choitz |
|---|--|--|--|

Send dues & other financial matters to:

Jeff Wimer  
305 Cherry Ln NE  
Albany, OR 97321  
jwimer5@comcast.net

Checks payable to: Willamette Valley Woodturners

Send changes to roster information (address, e-mail, phone#) to jwimer5@comcast.net

Or via email to:

[wwwprez2024@gmail.com](mailto:wwwprez2024@gmail.com)

or

[wwwturners@gmail.com](mailto:wwwturners@gmail.com)